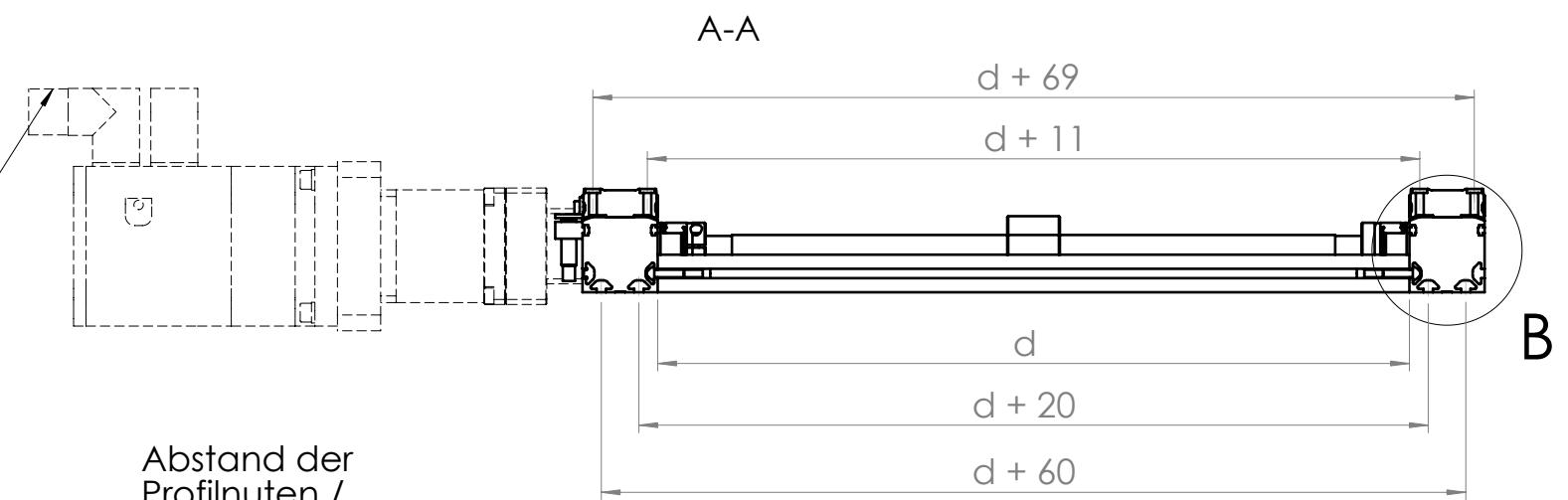
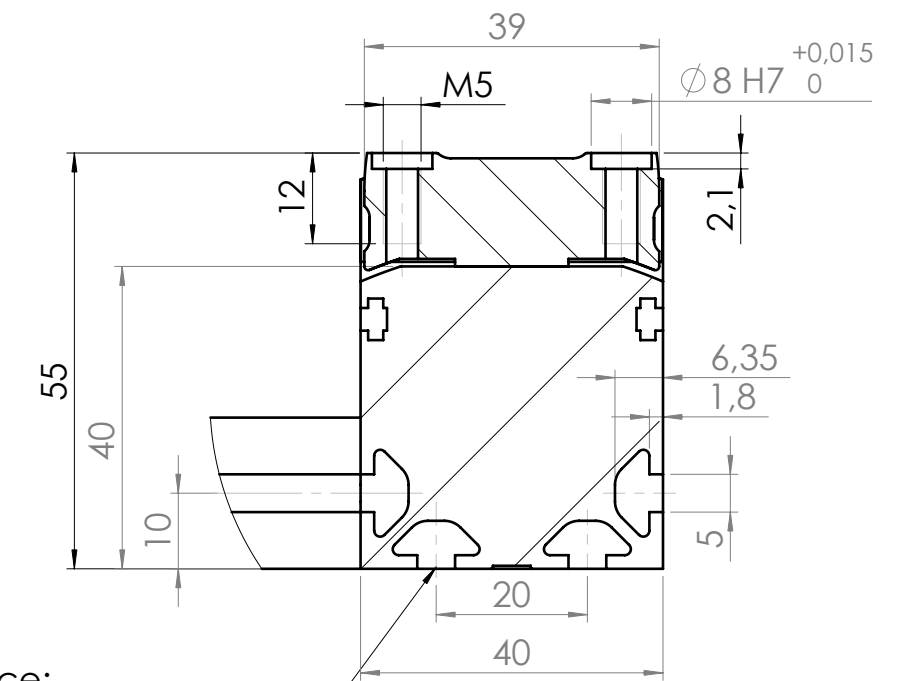


Hinweis / Notice:
Stecker oben,
connectors on top
(Standard)



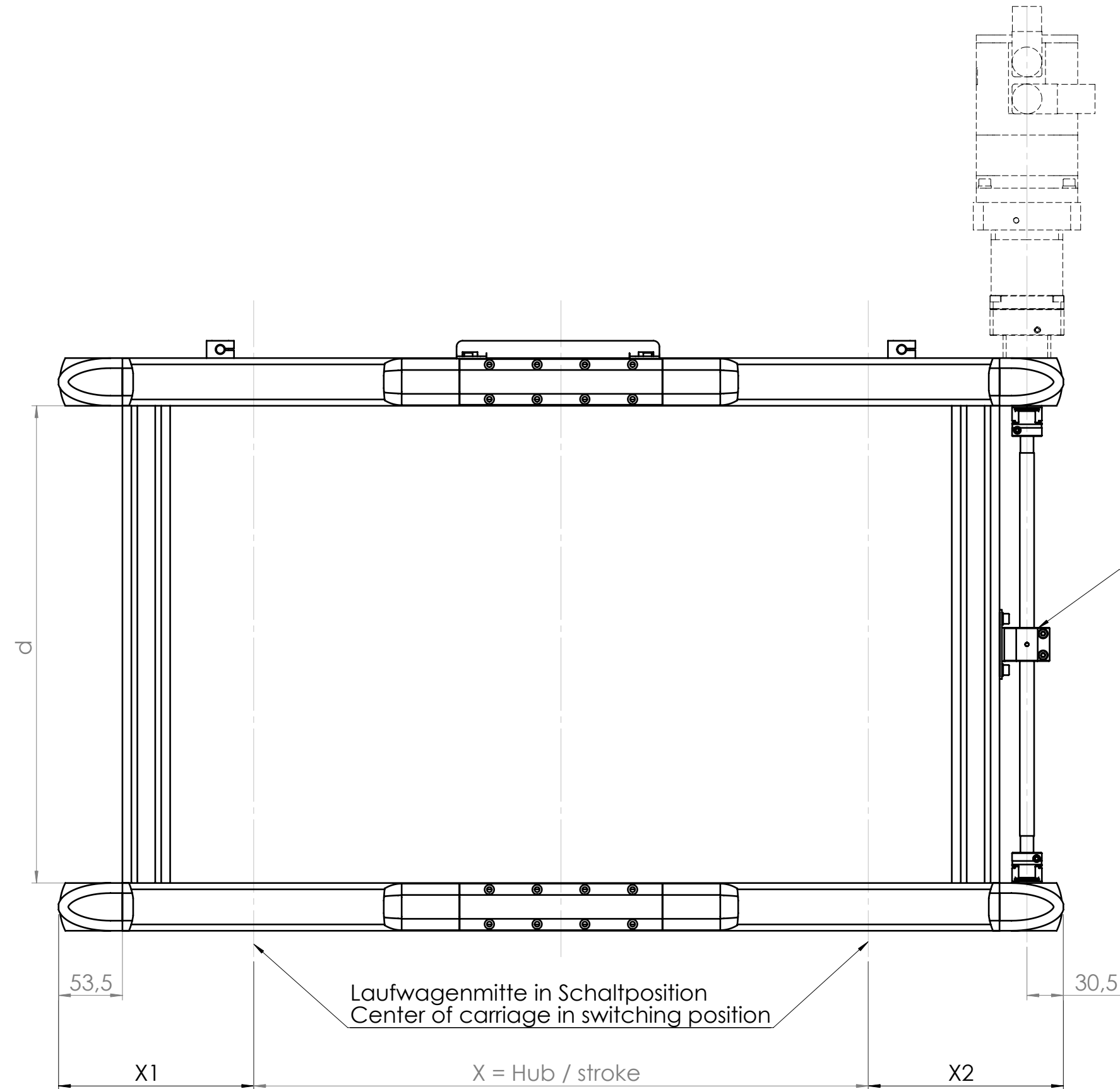
Abstand der
Profilnuten /
Distance of
profil T-slots

B (1 : 1)

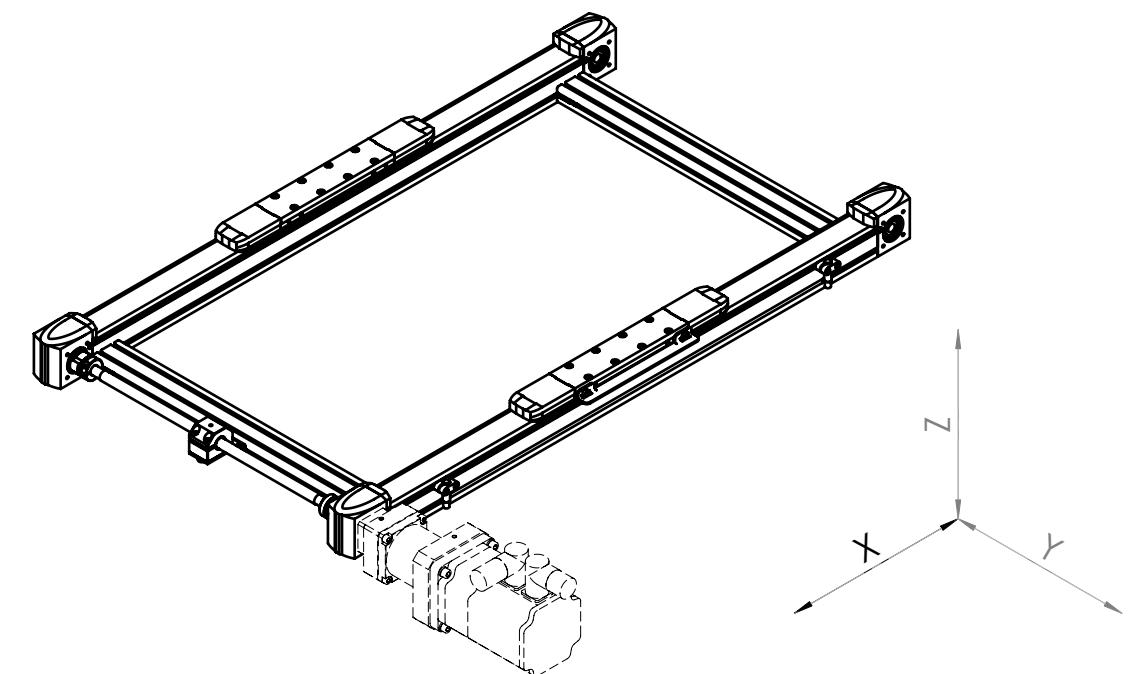


Notiz / Notice:
Verbindungselemente
siehe PAS-Katalog
Fasteners see PAS catalog

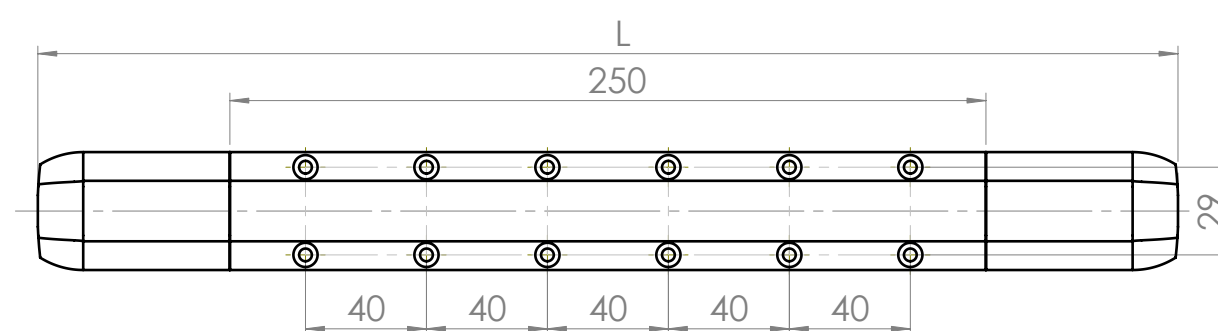
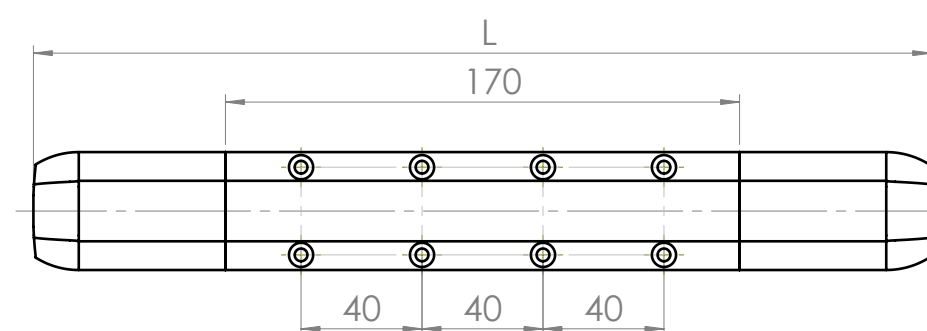
	d
max.	1400
Standard	840
min.	100



Hinweis / Notice:
d ≥ 850mm → Schaftlagerung
d ≥ 850mm → Shaft support



	L	X1	X2
Laufwagen Typ2 / carriage type 2 ohne Abdeckband / without coverband	200	163,5	163,5
Laufwagen Typ2 / carriage type 2 mit Abdeckband / with coverband	297	221	221
Laufwagen Typ4 / carriage type 4 ohne Abdeckband / without coverband	280	203,5	203,5
Laufwagen Typ4 / carriage type 4 mit Abdeckband / with coverband	377	261	261



Anbaubare Motoren siehe PAS-Katalog Attachable motors see PAS catalog					
Achse/ axis	Achs-Typ/ axis-typ	dargestellter Motor/ represented motor	Hub max./ stroke	Wiederhol- genauigkeit/ repeatability	Hub/Umdrehung/ stroke per revolution
X	MAXS1BR	SER397 / PLE60	3000mm	+/- 0,1	84mm / i