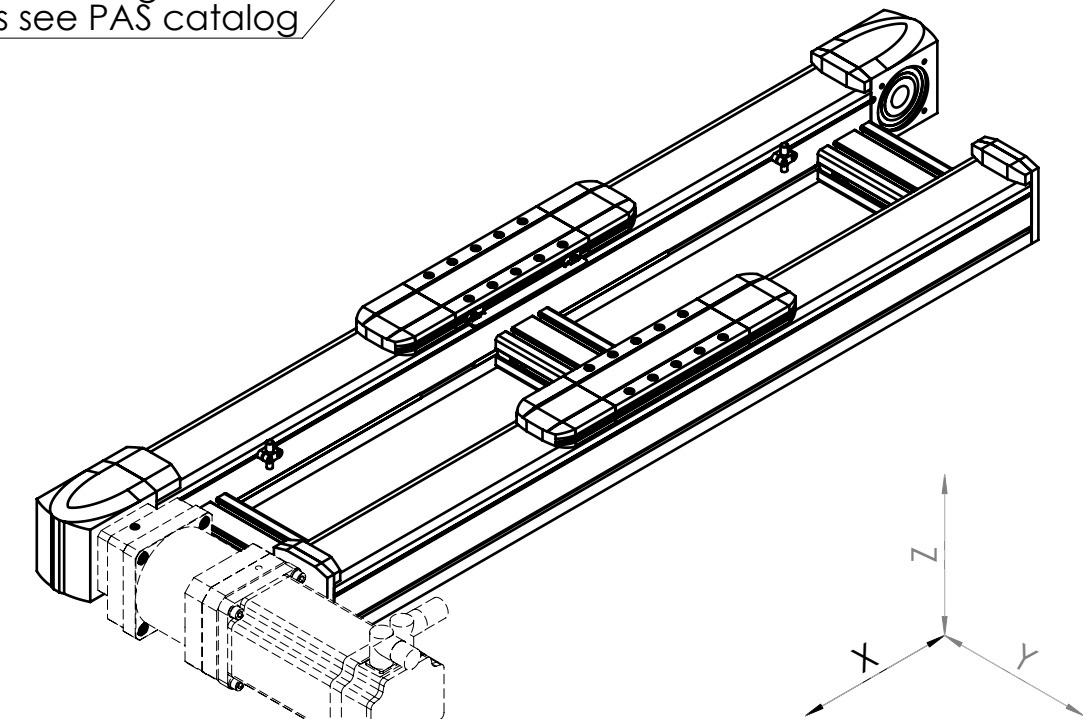
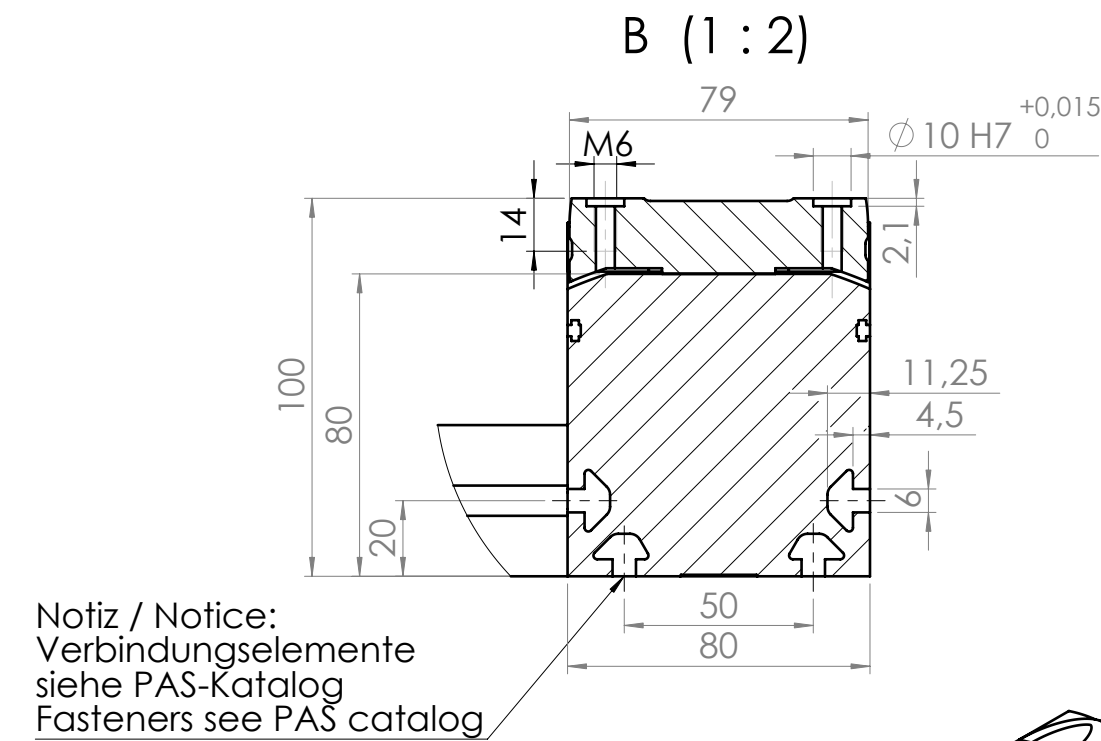
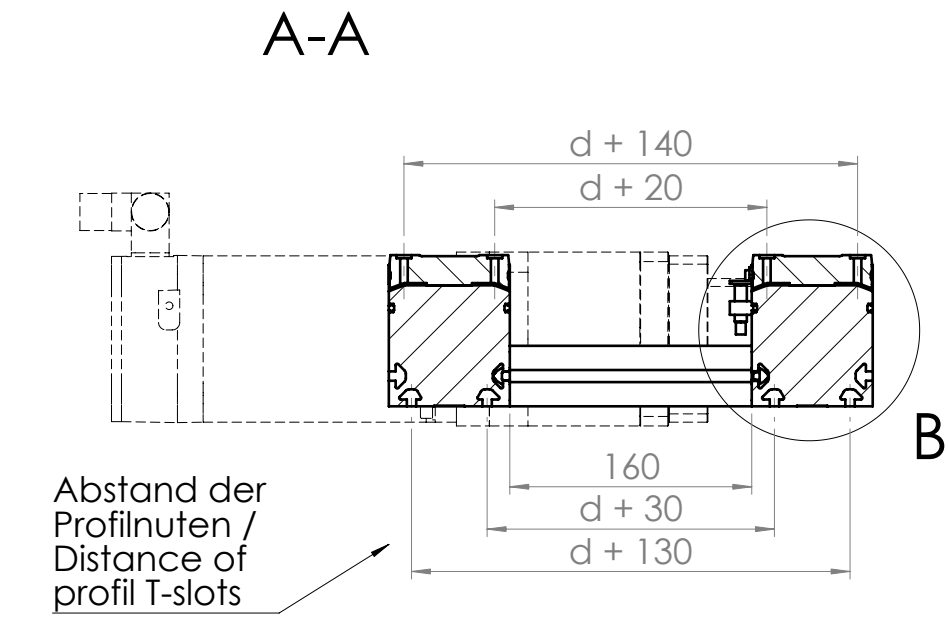
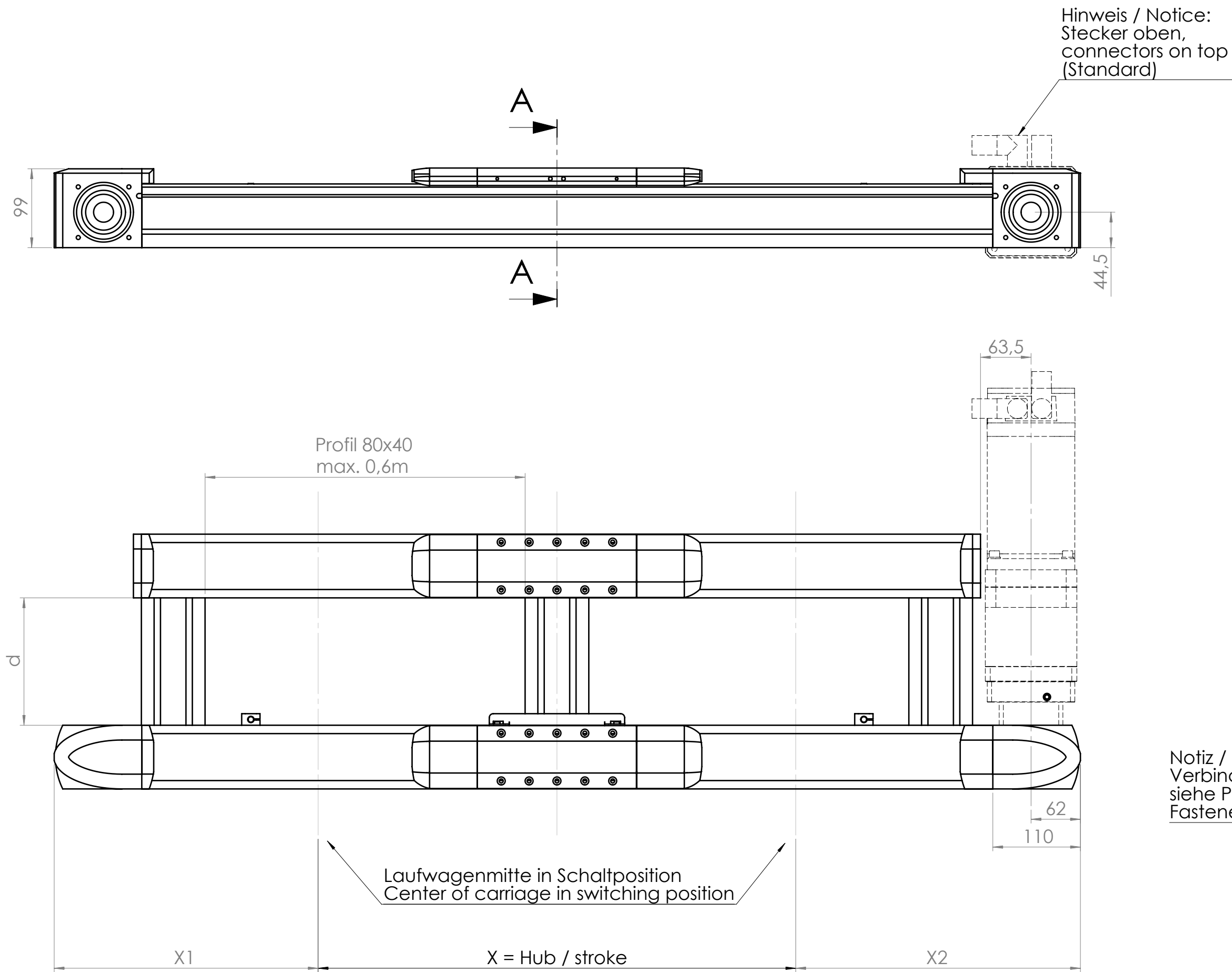
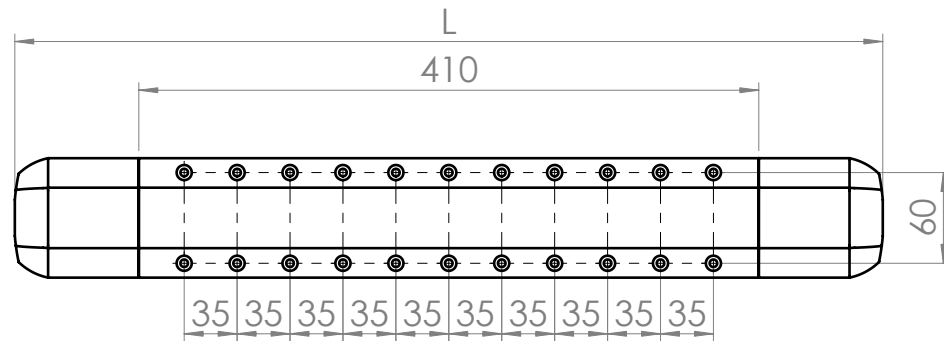
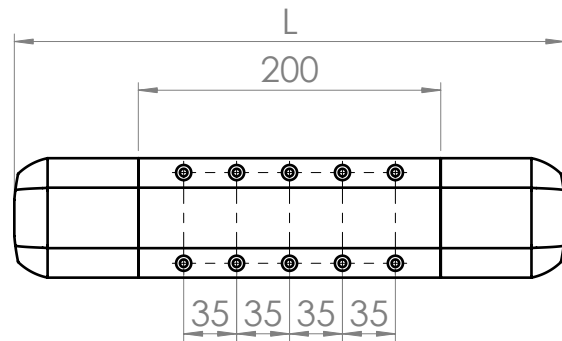


	d
max.	500
Standard	160
min.	120



	L	X1	X2
Laufwagen Typ1 / carriage type 1 ohne Abdeckband / without coverband	244	257	282
Laufwagen Typ1 / carriage type 1 mit Abdeckband / with coverband	364	333	358
Laufwagen Typ4 / carriage type 4 ohne Abdeckband / without coverband	454	362	387
Laufwagen Typ4 / carriage type 4 mit Abdeckband / with coverband	574	438	463



Anbaubare Motoren siehe PAS-Katalog Attachable motors see PAS catalog					
Achse/ axis	Achs-Typ/ axis-typ	dargestellter Motor/ represented motor	Hub max./ stroke	Wiederhol- genauigkeit/ repeatability	Hub/Umdrehung/ stroke per revolution
X	MAX-H43Bx	SER31122 / PLE120	5500mm	+/- 0,1	205mm / i